



HELLO,  
NEW  
LABOPORT  
SYSTEMS!

UNIQUE DESIGN  
FOR LAB LIFE  
LABOPORT®  
VACUUM PUMPS  
AND SYSTEMS

AN EYE FOR DETAIL

## RETHINKING EVERYDAY LAB PRACTICE

What aspects do you believe are key when using vacuum pumps in everyday lab practice? What does it take to create simple, economical processes that are reliable day in, day out? And what makes work enjoyable?

These are the questions we used as a guide when redesigning our successful laboratory pump series LABOPORT®. We became involved in daily lab work, asking users what they wished for, enlisting experts to perform tests and incorporating their suggestions.

**The result? Clever, elegant design with clear benefits in terms of handling and functionality.**

HELLO,  
NEW  
LABOPORT!



WE KNOW WHAT COUNTS

# UNIQUE DESIGN, EASE OF USE

■ **Exceptionally space saving**

The impressively compact device takes up little space.

■ **Easy to clean**

The smooth surfaces without any ribs or hard edges are easy to keep clean.

■ **ATEX-compliant and chemically resistant for very aggressive/corrosive gases**

The inner, wetted area has been equipped to transfer explosive atmospheres.



■ **Speed-controlled**

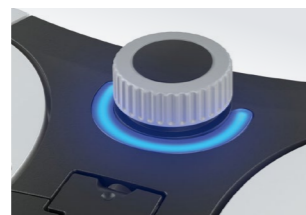
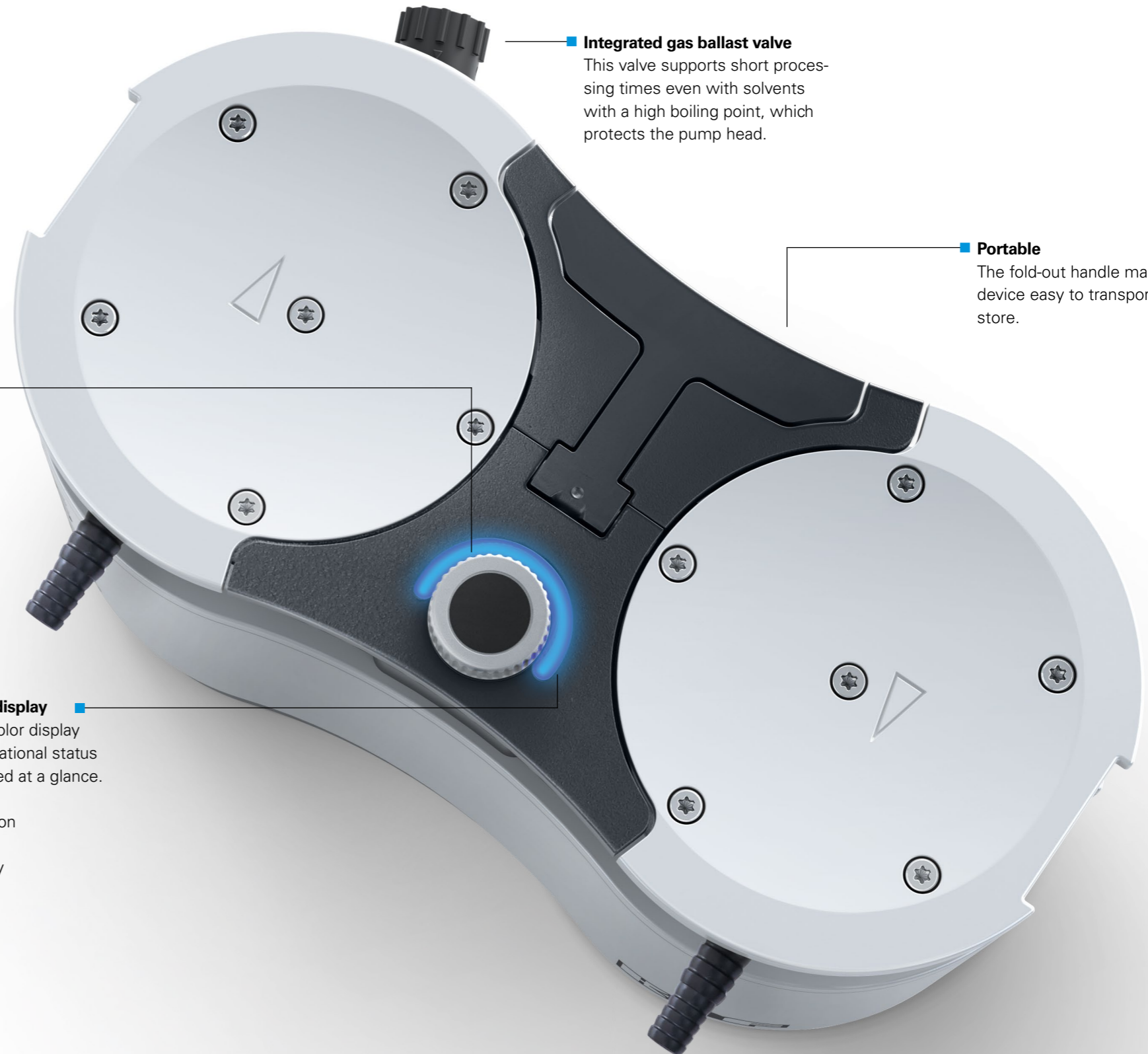
The speed can be controlled by simply manually adjusting the vacuum power using the control knob or via an interface by connecting the pump to KNF's LABOPORT® Vakuum-Controller. Ideal for combining with all common vacuum controllers with valve control.

■ **Integrated gas ballast valve**

This valve supports short processing times even with solvents with a high boiling point, which protects the pump head.

■ **Portable**

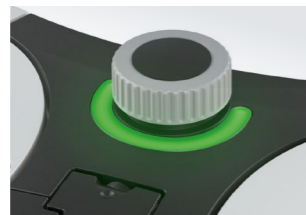
The fold-out handle makes the device easy to transport and store.



■ **3-color status display**

The changing color display allows the operational status to be ascertained at a glance.

Blue: in operation



Green: stand-by



Red: error

PERFECT FIT VACUUM SYSTEM

## MODULAR AND EXPANDABLE



LABOPORT® SC 820 G



LABOPORT® N 820 G

HELLO,  
NEW  
LABOPORT  
SYSTEMS!

The new laboratory vacuum pump system guarantees maximum performance and safety in the laboratory, tailored to your individual needs:

The powerful basic pump can be easily modified to an even higher environmentally friendly system. Various system components such as a separator, high-performance condenser and the new vacuum controller, allows the systems to be used for a wide range of laboratory applications.

### Simple, safe, precise

- Automatic, accurate recognition and monitoring of the boiling point using the integrated ramp function
- No solvent library needed
- High recovery rates even with low boiling point solvents
- ATEX-compliant in accordance with (Ex) II 2/-G IIB+H2 T3 internal atmosphere only



LABOPORT® Vacuum-Controller System  
for Vacuum Pump System SC 820 G and SC 840 G



LABOPORT® SR 820 G

### Environmentally friendly technology

- Safe recovery of solvents
- Protection against aggressive chemicals
- High energy efficiency



SIMPLE AND INTUITIVE

## SMART CONTROLLED

More efficient, more convenient and much safer in the laboratory: With our new laboratory vacuum pump systems you have your vacuum under control at all times.

The new highlight: The vacuum controller for the pump systems SC 820 G and SC 840 G. The controller provides intuitive handling and maximum operating comfort. Its newly developed touchscreen display with high-precision vacuum control provides full process control, and thanks to the large user interface, you always have an overview.

All functions are clearly displayed on one level – at a glance and without any complicated sub menus. The new Vacuum Controller stands for absolute precision, safety and functionality – for almost all common laboratory applications... simply the way you need it.

### Wide range of use

Four operating modes for almost all common laboratory applications.



### All at a glance

Simple, intuitive operation thanks to touch-screen display and precise rotary knob control.

### Safe to use

Wireless remote control for safe operation outside for closed fume cupboards.



# AN ALL-ROUNDER IN THE LAB



LABOPORT® N 96



LABOPORT® N 820 G



LABOPORT® SR 820 G



LABOPORT® SH 820 G



LABOPORT® SC 820 G

		LABOPORT® N 96	LABOPORT® N 820 G II 2/-G IIB+H2 T3 internal atmosphere only	LABOPORT® N 840 G II 2/-G IIB+H2 T3 internal atmosphere
APPLICATION	<b>Filtration</b>	x		x
	<b>Vacuum Oven</b>		x	x
	<b>SPE</b>	x		
	<b>Degassing</b>		x	x
	<b>Fluid aspiration</b>	x	x	x
	<b>Distillation</b>			
	<b>Gel drying</b>		x	
	<b>Rotary evaporation</b>		x	x
	<b>Centrifugal concentration</b>			x
	<b>Multi-user vacuum systems</b>			
TECHNICAL DATA	<b>Flow rate (m³/h) at atm. pressure</b>	0.4	1.2	2.04
	<b>Ultimate vacuum (mbar abs.)</b>	<130	6	6
	<b>Operating pressure (bar)</b>	2.5	0.1	0.1
	<b>Hose connections (mm)</b>	NPT 1/8 – ID6, PP	ID 9.5–8, PVDF	ID 9.5–8, PVDF
	<b>Permissible media and ambient temperature</b>	+5 ... +40 °C	+5 ... +40 °C	+5 ... +40 °C
	<b>Integrated gas ballast valve</b>	No	Yes	Yes
	<b>Integrated rotational speed control</b>	Yes	Yes	Yes
	<b>Weight (kg)</b>	1.3	8.8	11.3
	<b>Dimensions W x H x D (mm)</b>	156 x 119 x 75	163 x 220 x 259	177 x 240 x 289
MATERIAL	<b>Pump head</b>	PPS	PTFE	PTFE
	<b>Diaphragm</b>	PTFE-coated	PTFE-coated	PTFE-coated
	<b>Valves</b>	FKM	FFPM	FFPM
ACCESSORIES	<b>Column fixture</b>	Order No. 323484		

**ATEX KEY FOR LABOPORT N 820 G AND N 840 G AND THE TRANSFERABLE, EXPLOSIVE GASES AND VAPORS:**

II 2/-G IIB+H2 T3 INTERNAL ATMOSPHERE ONLY			
	T1	T2	T3
	methane		
I IA	acetone, ammonia, benzene (pure), acetic acid, ethane, ethyl acetate, carbon oxide, methanol, propane, toluene	ethyl alcohol, n-butane, n-butyl alcohol	gasolines, diesel fuel, aviation fuel, fuel oils, n-hexane
I IB	town gas	ethene	
I IC	hydrogen		

LABOPORT® SR 820 G	LABOPORT® SR 840 G	LABOPORT® SH 820 G	LABOPORT® SH 840 G	LABOPORT® SC 820 G with Vacuum-Controller	LABOPORT® SC 840 G with Vacuum-Controller
x	x				
x	x			x	x
	x				
x					
		x	x	x	x
		x	x	x	x
x	x				
		x	x	x	x
1.2	2.04	1.2	2.04	1.2	2.04
6					
0,1					
ID 9.5–8, PVDF					
+5 ... +40 °C					
Yes					
Yes					
10,7	13.1	11.7	14.1	13.35	15.75
282 x 234 x 260	299 x 250 x 274	323 x 416 x 260	340 x 416 x 274	Vacuum Pump System: 347 x 416 x 260 Controller: 162 x 96 x 51, Docking station controller: 96 x 88 x 101	Vacuum Pump System: 366 x 416 x 274 Controller: 96 x 88 x 101
PTFE					
PTFE-coated					
FFPM					

**ZUBEHÖR**

	LABOPORT® SR 820 G	LABOPORT® SR 840 G	LABOPORT® SH 820 G	LABOPORT® SH 840 G	LABOPORT® SC 820 G	LABOPORT® SC 840 G
<b>Separator flask</b>	Order No. 047729					
<b>High performance condenser with pressure relief valve</b>	-		Order No. 114855			
<b>Hose connector with O-ring (FPM)</b>	Order No. 323609					
<b>Hose connector PP (for hose ID10)</b>	Order No. 026237					
<b>Screw connection cap red, GL18 (for hose connector ID 026237)</b>	Order No. 025980					
<b>Hose connector PP (for hose ID8)</b>	Order No. 025981					
<b>Screw connection cap red, GL14 (for hose connector ID 025981)</b>	Order No. 025982					
<b>Key for hose connector</b>	Order No. 316279					
<b>Connection cable (for combination with VC 900) 2 m</b>	Order No. 323829					
<b>Connecting cable (for combination with VC 900) 5 m</b>	Order No. 323830					
<b>Hose-BGR Separator (1x for SC 820/840 G)</b>	-				Order No. 329998	
<b>Hose-BGR High performance condenser (1x for SC 820/840 G)</b>	-				Order No. 317157	
<b>Hose-BGR for Separator flask (1x for SH 840 G)</b>	-		Order No. 323095		-	
<b>Hose-BGR for high performance condenser (1x for SH 840 G)</b>	-		Order No. 317157		-	
<b>Hose connector Y-piece - ID10</b>	Order No. 026432					
<b>Docking station controller</b>	-				Order No. 336784	
<b>Battery pack controller</b>	-				Order No. 339004	

## KNF SALES ORGANIZATION

KNF – Business Unit LAB  
Alter Weg 3  
79112 Freiburg  
Tel. +49 7664 5909 0  
backoffice.lab@knf.com

## KNF PRODUCT CENTERS

**Gas Pumps** KNF Neuberger GmbH  
DE-79112 Freiburg  
info.de@knf.com  
www.knf.de

**Liquid Pumps** KNF Flodos AG  
CH-6210 Sursee  
info.flodos@knf.com  
www.knf-flodos.ch