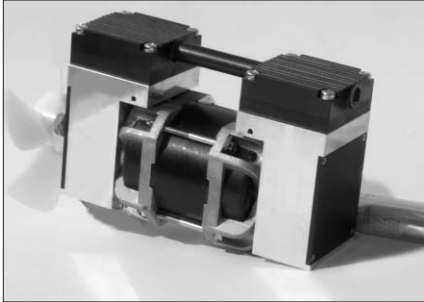
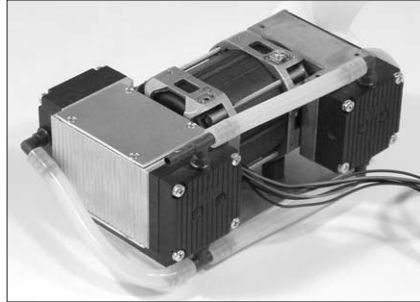


## DIAPHRAGM VACUUM PUMPS FOR HOT SATURATED GASES/AUTOCLAVES



**N 816.3KPE**



**N 816.6KPE**

### Concept

Diaphragm Vacuum Pumps from KNF are based on a simple principal - an elastic diaphragm, fixed on its edge, moves up and down its central point by means of an eccentric. In this way the medium is transferred using automatic valves.

The pumps are equipped with the patented stress-optimized structured diaphragm, resulting in a high pneumatic performance, a durable product and compact size. Special valves ensure that the product can cope easily with vapor and condensation.

With the unique KNF modular system, the parts used to transfer the gases can be made from materials with varying degrees of durability and compatibility. The customer has a choice of pump drives ranging from a selection of motors. Please contact us for further details.

### Features

- Uncontaminated flow
- No contamination of the media with oil-free operation
- Originally developed for sterilization and drying processes
- Optimal flow characteristics for fast drying of wet gases
- Condensate-repellent surfaces in the flow area
- Efficient condensate removal through inclined or wall mounting
- Compact and powerful
- Vacuum down to 10 mbar abs.
- Maintenance free
- High level of gas tightness
- Can operate in any mounted position

### Areas of use

These pumps are optimally designed to satisfy the requirements of steam sterilization and vacuum drying, leading to very reliable operation.

The pump heads are made of Ryton and in the supply area have a condensate-repellent surface with optimized flow paths. This technology, combined with inclined mounting or wall mounting, facilitates good condensate removal and fast drying.

## PERFORMANCE DATA

Type	Delivery (l/min)	Vacuum (mbar absolute)	atm. press.	Pressure (bar g)	Weight (kg)
N 816.3 KPE	16	15		0.5	3.0
N 816.6 KPE	28	10		0.5	3.15

# N 816.3 KPE

## PERFORMANCE DATA

Type and Order No.	Delivery at atm. Pressure (l/min) <sup>1)</sup>	Max. operating pressure (bar g)	Ultimate vacuum (mbar abs.)
N 816.3 KPE	16	0.5	15

<sup>1)</sup> Litre in STP

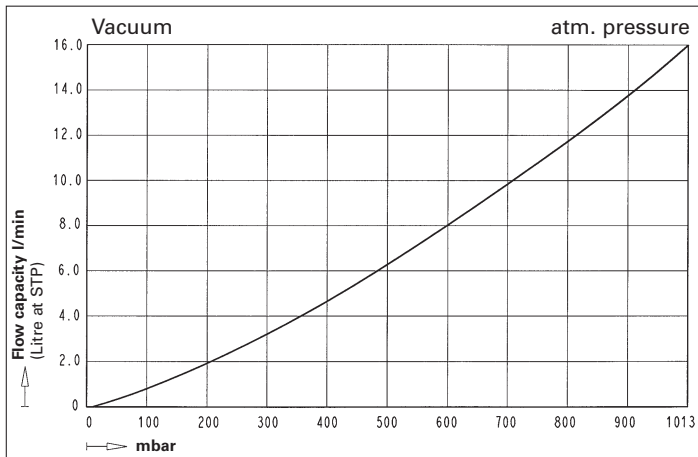
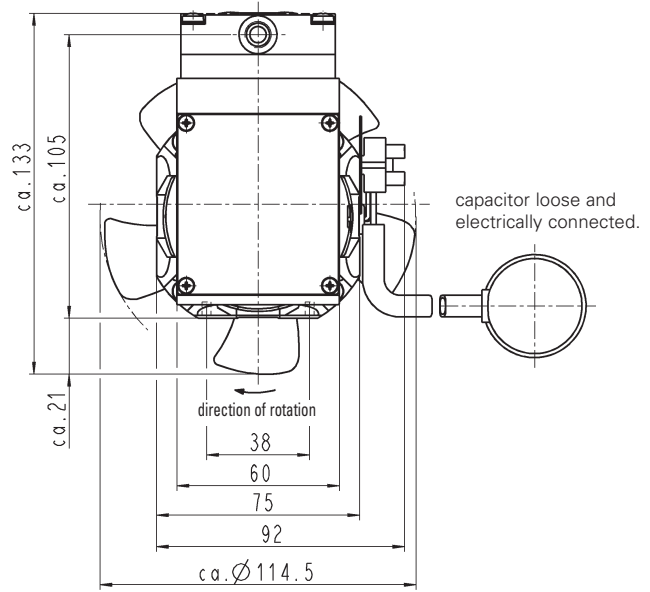
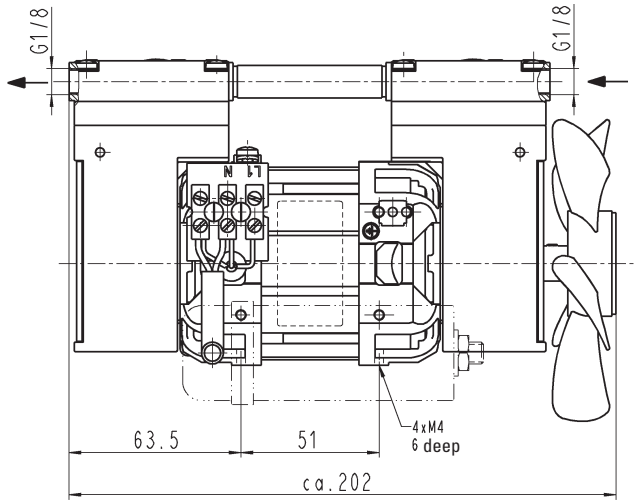
**Dimensions in mm** (All dimensional tolerances conform to DIN ISO 2768-1, Tolerance Class V)

## MOTOR DATA

Protection class	IP 00	IP00	
Voltage/Frequencies (V/Hz)	~230/50	~115/60	
Power P <sub>1</sub> (W)	100	100	
Operating current (A)	0.6	1.3	

## MODEL CODES AND MATERIALS

Type and Order No.	Pump head	Diaphragm	Valves
N 816.3 KPE	Ryton <sup>2)</sup>	EPDM	EPDM



# N 816.6 KPE

## PERFORMANCE DATA

Type and Order No.	Delivery at atm. Pressure (l/min) <sup>1)</sup>	Max. operating pressure (bar g)	Ultimate vacuum (mbar abs.)
N 816.6 KPE	28	0.5	10

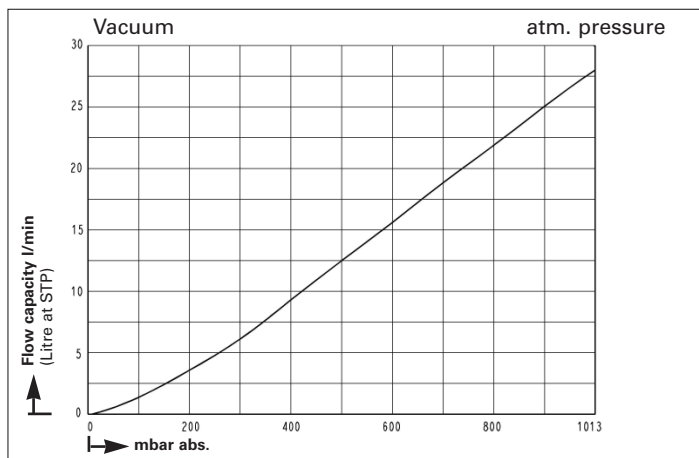
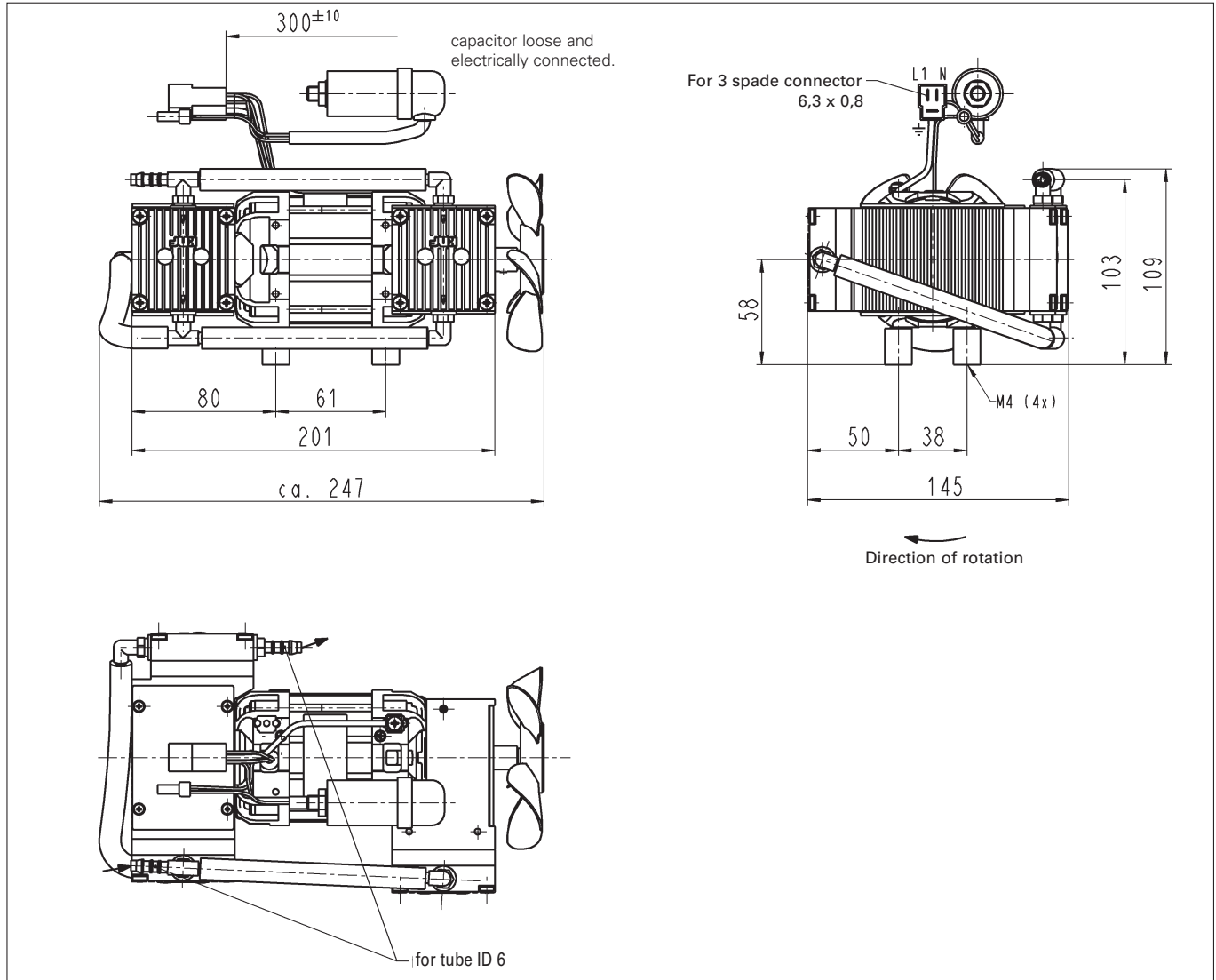
<sup>1)</sup> Litre in STP

## MODEL CODES AND MATERIALS

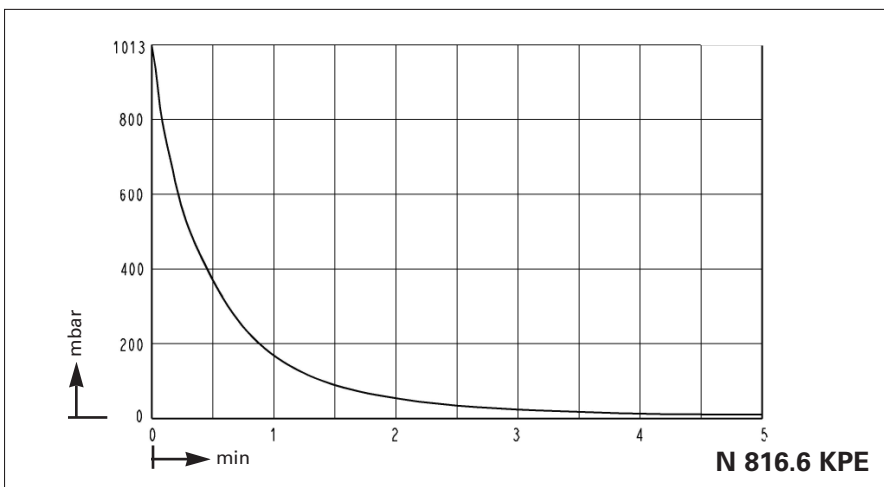
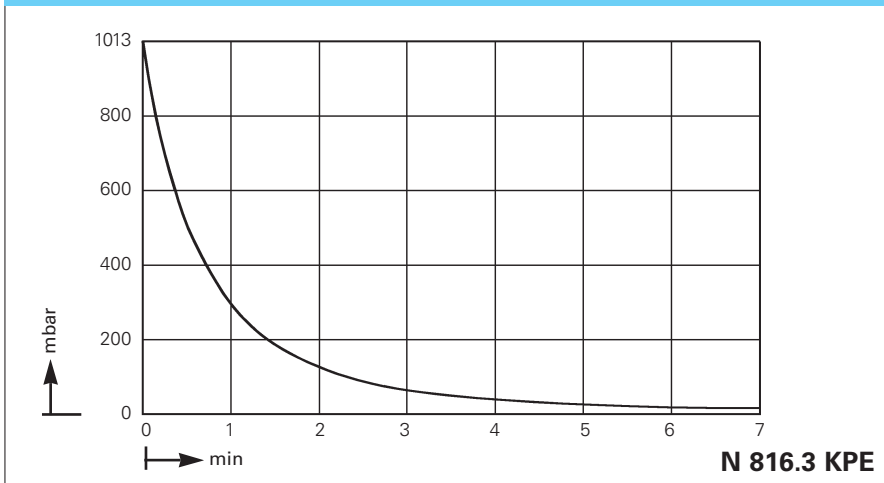
Type and Order No.	Pump head	Diaphragm	Valves
N 816.6 KPE	Ryton <sup>2)</sup>	EPDM	EPDM

## MOTOR DATA

Protection class	IP 00	IP00	
Voltage/Frequencies (V/Hz)	~230/50	~115/50	
Power P <sub>1</sub> (W)	130	130	
Operating current (A)	0.8	1.7	



## Pump down time 10 l receiver



### TECHNICAL DETAILS

Maximum permissible gas and ambient temperature: between +5°C and +40°C.

Versions for higher gas temperature and with motors for other voltages, frequencies and protection classes on request.

Versions for higher pressure and working contra pressure discuss with KNF sales engineers.

2) Phillips Petroleum registered trade mark

for unusual problems. Call us and talk to our sales engineers.

### KNF NEUBERGER, INC.

Two Black Forest Road  
Trenton, New Jersey 08691-1810  
Phone: 609-890-8600 · Fax: 609-890-8323  
Web: <http://www.knf.com>