

# N 87 SERIES EXPLOSION PROOF PUMPS



N 87 TTE Ex

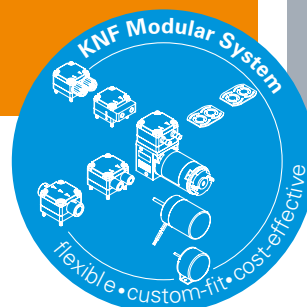


## ADVANTAGES

- High chemical resistance
- Robust design
- Copes well with vapor and condensation
- High level of performance in a compact size
- Excellent price/performance ratio
- Motor approved in accordance with ATEX/IECEX

## POSSIBLE AREAS OF USE

- Environmental monitoring – especially in potentially explosive fields
- Process industry
- Chemical industry



Please visit our website  
[www.knf.com](http://www.knf.com)  
to get more information

## PERFORMANCE DATA

Series model	N 87	
Material design	TTE Ex	
Pump head	PVDF	
Diaphragm	PTFE-coated	
Valves	FFPM	
Flow rate at atm. pressure (l/min)	7.5	
Ultimate vacuum (mbar abs.)	140	
Max. operating pressure (bar rel./psig)	1.5/21.8	
Permissible ambient temperature (°C)	+5 ... +40	
Permissible media temperature (°C)	+5 ... +40	
Weight (kg/lbs)	7.0/15.4	

## ELECTRICAL DATA

Voltage (V)	230	115
Motor	Capacitor motor	
Protection class motor	IP 66	
Protection class pump	IP 55	
Frequency (Hz)	50/60	
Power P <sub>1</sub> (W)	160/158	162/155
I <sub>max</sub> (A)	0.96/0.72	1.92/1.40
Explosion protection pump parts	Ex II 2G c IIB + H2 T4 X	
Explosion protection capacitor motor	Ex II 2G Ex db IIC T4	

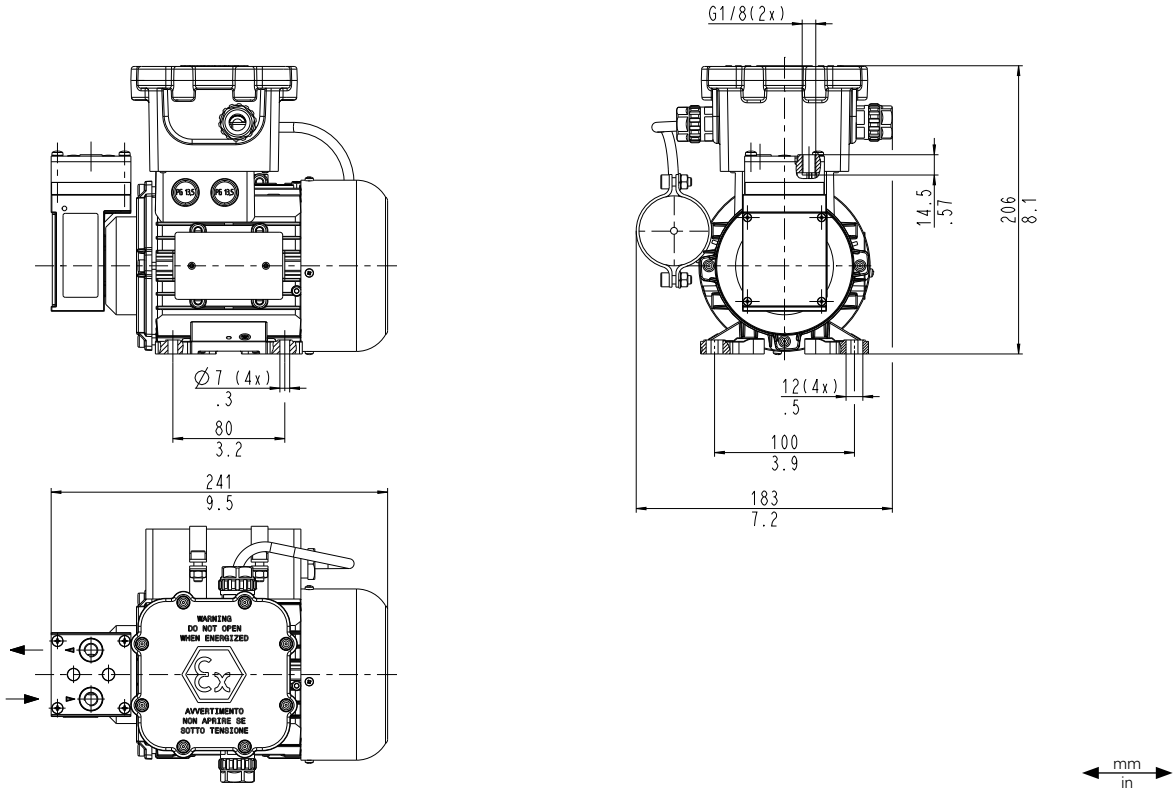
# N 87 TTE EX

## PERFORMANCE DATA

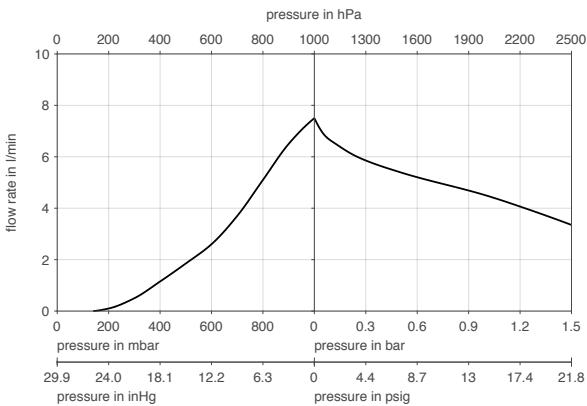
Series model	Flow rate at atm. pressure (l/min) <sup>1)</sup>	Max. operating pressure (bar rel./psig)	Ultimate vacuum (mbar abs.)
N 87 TTE Ex	7.5	1.5/21.8	140

<sup>1)</sup> Liter at STP

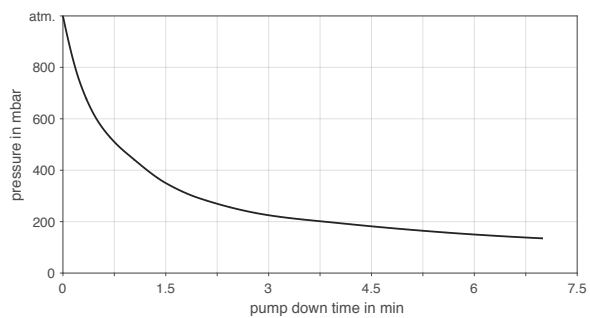
## N 87 TTE EX



## N 87 TTE EX



## N 87 TTE EX | PUMP DOWN TIME FOR 5 LITER VESSEL



The performance values for the series models shown on this data sheet were determined under test conditions. The actual performance values may differ and depend in particular on the usage conditions and therefore on the specific application, on the parameters of the components involved in the user's system and on any technical modifications carried out which deviate from the standard configuration or the as delivered condition.

If individual designs have been created for specific customers on the basis of series models, other technical performance data may apply. Before operation begins, the relevant operating instructions and/or assembly or installation instructions should be read and the safety information contained in these instructions should be noted. KNF reserves the right to make changes to the product and the associated documentation without prior notice to the customer.



[www.knf.com](http://www.knf.com)